

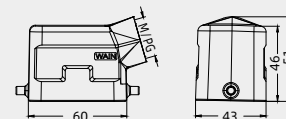
6B Metal hoods/housings

Degree of protection: IP67

Hoods, side entry



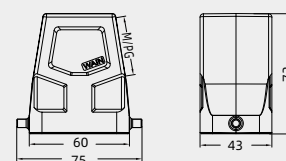
Thread	Designation	Order No.
M20	W6B-SE-2B-M20	111 106 510 1001
M25	W6B-SE-2B-M25	111 106 510 1002
PG13.5	W6B-SE-2B-PG13.5	111 106 510 1003
PG16	W6B-SE-2B-PG16	111 106 510 1004



Hoods, side entry, high construction



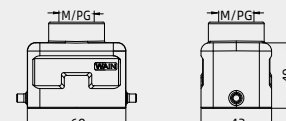
Thread	Designation	Order No.
---	W6B-BEH-2B	111 106 910 5001
M25	W6B-SEH-2B-M25	111 106 510 5001
M32	W6B-SEH-2B-M32	111 106 510 5002
PG21	W6B-SEH-2B-PG21	111 106 510 5003
PG29	W6B-SEH-2B-PG29	111 106 510 5004



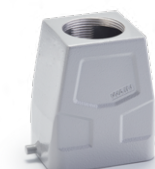
Hoods, top entry



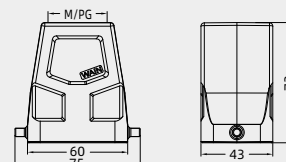
Thread	Designation	Order No.
M20	W6B-TE-2B-M20	111 106 410 1001
M25	W6B-TE-2B-M25	111 106 410 1002
PG13.5	W6B-TE-2B-PG13.5	111 106 410 1003
PG16	W6B-TE-2B-PG16	111 106 410 1004



Hoods, top entry, high construction



Thread	Designation	Order No.
---	W6B-BEH-2B	111 106 910 5001
M25	W6B-TEH-2B-M25	111 106 410 5001
M32	W6B-TEH-2B-M32	111 106 410 5002
PG21	W6B-TEH-2B-PG21	111 106 410 5003
PG29	W6B-TEH-2B-PG29	111 106 410 5004

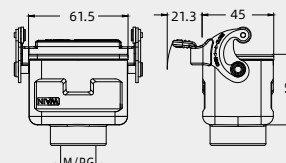


Housings, cable to cable



Thread	Designation	Order No.
M20	W6B-CCT-1L/SC-M20	111 106 721 1005
M25	W6B-CCT-1L/SC-M25	111 106 721 1008
PG13.5	W6B-CCT-1L/SC-PG13.5	111 106 721 1006
PG16	W6B-CCT-1L/SC-PG16	111 106 721 1007

Please refer to page 15-02 for choosing proper model of lock.



Housings, cable to cable, high construction



Thread	Designation	Order No.
M25	W6B-CCTH-1L/SC-M25	111 106 721 5001
M32	W6B-CCTH-1L/SC-M32	111 106 721 5002
PG21	W6B-CCTH-1L/SC-PG21	111 106 721 5003
PG29	W6B-CCTH-1L/SC-PG29	111 106 721 5004

Please refer to page 15-02 for choosing proper model of lock.

